



SAL TRADICIONAL

ROTA DO ATLÂNTICO

CULTURAL ROUTES and PROPOSALS FOR THE UK 'ROUTE OF SALT'

Andrew Fielding BA MIFA



Plenário da sede da Assembleia Municipal de Aveiro
15 de Novembro de 2011



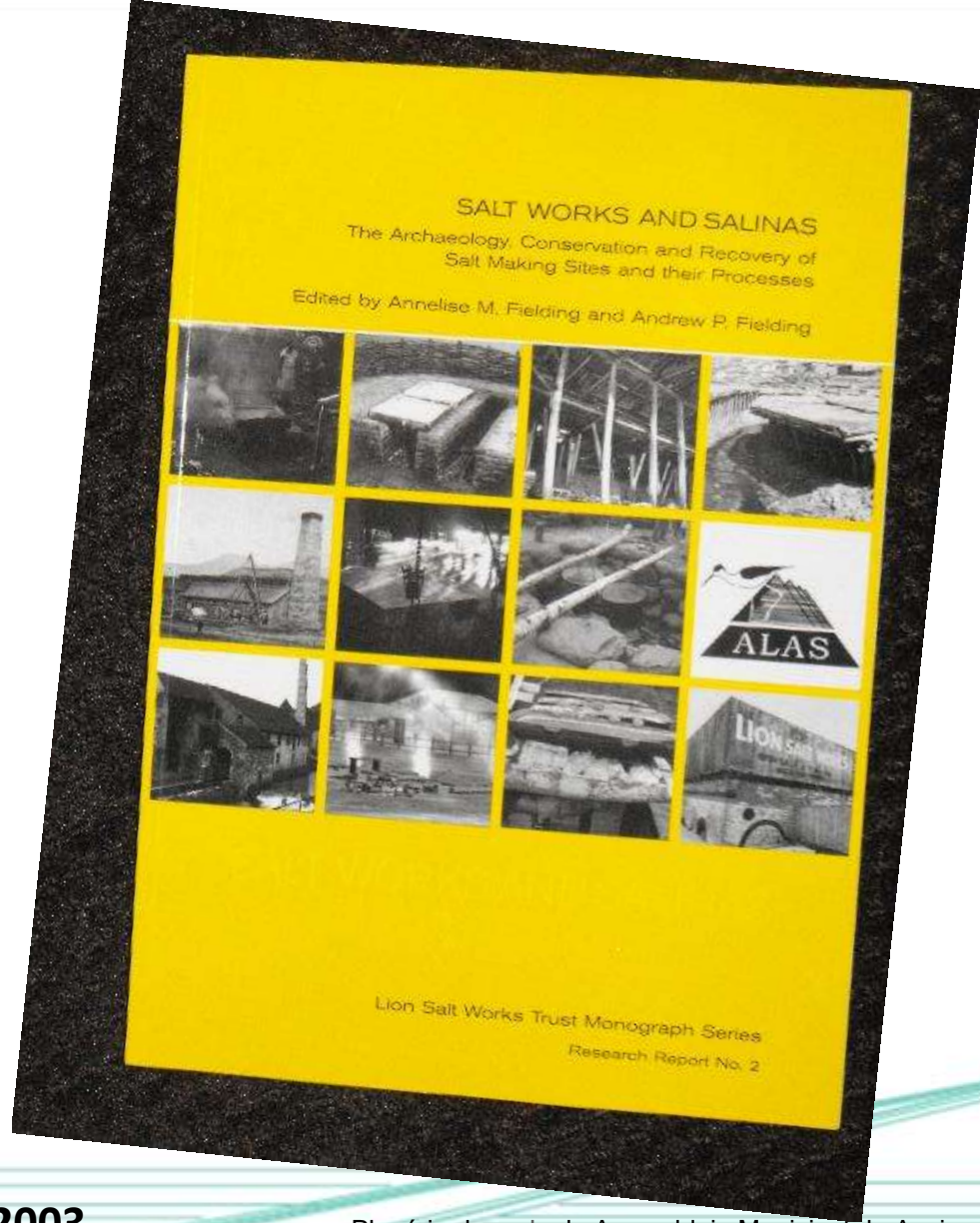
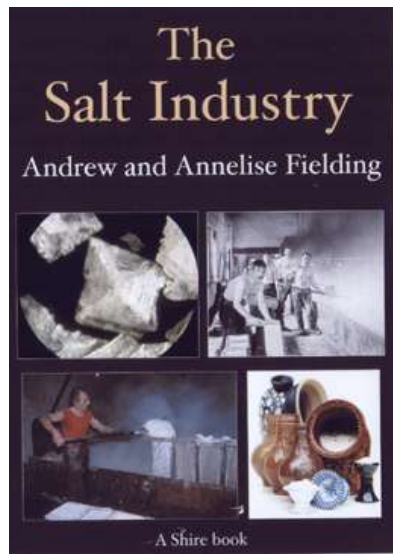
Investindo no nosso futuro comum





SAL TRADICIONAL

ROTA DO ATLÂNTICO



A & A Fielding publications
www.aandafieling.uwclub.net

2005

2003

Plenário da sede da Assembleia Municipal de Aveiro
15 de Novembro de 2011



Investindo no nosso futuro comum

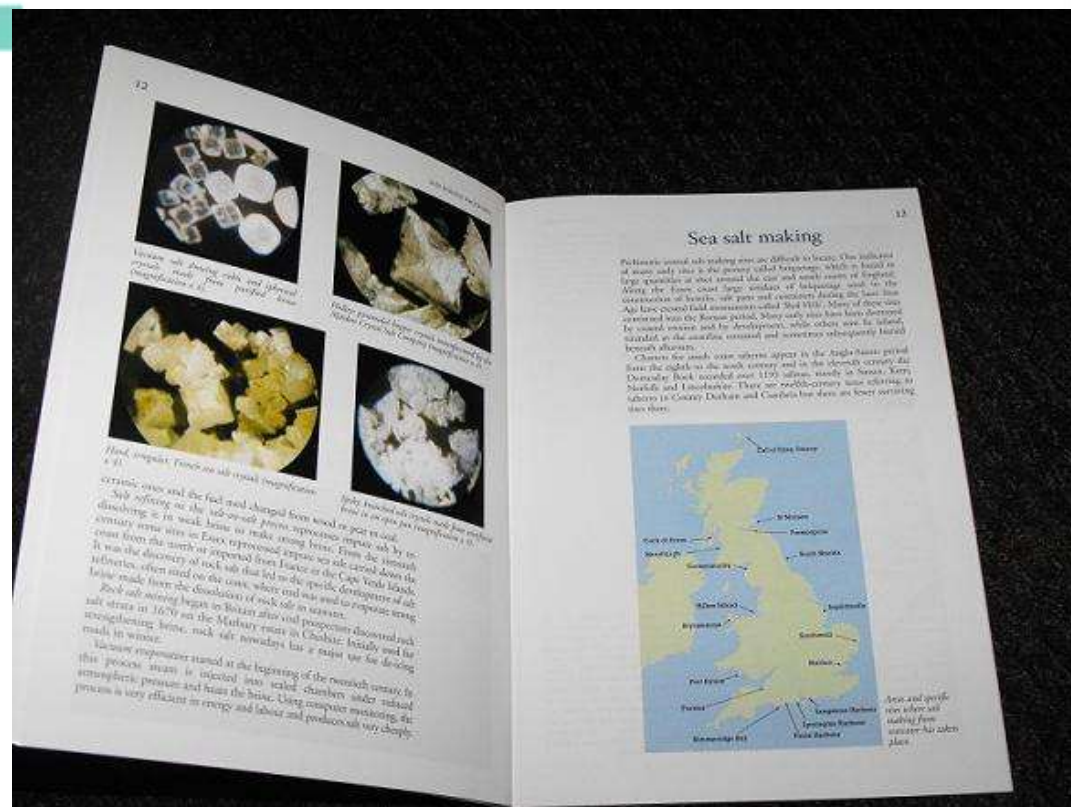




SAL TRADICIONAL

ROTA DO ATLÂNTICO

IMPORTANT TO LINK UP SITES



Plenário da sede da Assembleia Municipal de Aveiro
15 de Novembro de 2011



SAL TRADICIONAL

ROTA DO ATLÂNTICO

CULTURAL ROUTES



Local

Regional

National

International

DIFFICULTIES

- Never enough money
- Finding the time
- Sustainability
- Over reliance on a few people

Plenário da sede da Assembleia Municipal de Aveiro
15 de Novembro de 2011



SAL TRADICIONAL
ROTA DO ATLÂNTICO

CULTURAL ROUTES

Other Routes and Trails include Salt Sites

We can learn from them

Borrow the things that work



SAL TRADICIONAL
ROTA DO ATLÂNTICO

LEWIS AND CLARK TRAIL OF DISCOVERY USA

Annual Salt
Making Event

At

Seaside, Oregon

<http://lewisandclarktrail.com/>





SAL TRADICIONAL
ROTA DO ATLÂNTICO



LEWIS AND CLARK TRAIL OF DISCOVERY USA

Annual Salt
Making Event

At

Seaside, Oregon



<http://www.seasidemuseum.org/saltmakerspromo.cfm>



SAL TRADICIONAL
ROTA DO ATLÂNTICO



European
Route of
Industrial
Heritage

www.erih.net



ERIH European Route of Industrial Heritage

Regional Routes
Thematic Routes

Subscriptions for
Anchor Points
&
Supporting Sites



Legend		Anchor Point	Site on a Regional Route	Site
Iron & Steel	Mining	Textiles	Manufacturing	Energy
Transport & Communication	Water	Service & leisure industry	Landscapes	Housing & Architecture

<http://www.erih.net/>



SAL TRADICIONAL
ROTA DO ATLÂNTICO

EUROPEAN GARDEN HERITAGE NETWORK

Gardens & Cultural Landscapes

<http://cmsen.eghn.org/home>





SOMERSET, UK

SAL TRADICIONAL
ROTA DO ATLÂNTICO

EUROPEAN GARDEN HERITAGE NETWORK

Gardens & Cultural Landscapes

Stert Bird Hide, Somerset
Salt marsh, ecology, birds





PAYS DE LA LOIRE, FRANCE

<http://cmsfr.eghn.org/home>

SAL TRADICIONAL
ROTA DO ATLÂNTICO

EUROPEAN GARDEN HERITAGE NETWORK

Gardens & Cultural Landscapes

Guerande

Terre de Sel, Pradel

Musee des Marais des Salants, Batz

Maison des Paludiers

La Briere





Other routes are funded through EU Partnerships

CANTATA

**Historic Landscapes
Economic Tourism**

Denbighshire, Wales
Shannon, Ireland
Montemor-O-Velho, Portugal
Poher, Brittany
Galicia, Spain





SAL TRADICIONAL
ROTA DO ATLÂNTICO



CANTATA

Historic Landscapes Economic Tourism

Denbighshire, Wales
Shannon, Ireland
Montemor-O-Velho, Portugal
Poher, Brittany
Galicia, Spain

Final Conference

THURSDAY 17TH NOVEMBER 2011
9am to 4pm
Ruthin Castle Hotel
Ruthin, Denbighshire
North Wales LL16 2NU

AGENDA

- 8:30 Registration and coffee
- 9:30 Welcome
- 9:45 Opening and Introductions
- 9:50 to 12:15 Speakers and presentations
- 12:15 to 1:30 Lunch
- 1:30 to 3:30 Speakers and presentations
- 3:30 Closing remarks
- 4:30 Conference Close

INTRODUCTION

Cantata is a unique partnership of five member states in the Atlantic Area of Europe, supporting local businesses to connect tourists to 'off the beaten track' destinations, as part of a 2.3 billion Euro tourism development project.

The regions - which include Denbighshire in North Wales, Shannon in Ireland, Poher in Brittany, Galicia in Northern Spain and Montemor-o-Velho in Portugal - experience the same challenge in attracting visitors who often bypass the regions for more traditional destinations.

The conference marks the third stage in this ambitious project.

EVENT

Join us for this international event to discover how the project's partners have worked closely with local businesses to find innovative solutions to this challenge.

Enjoy fascinating presentations on tourism and innovation from the Cantata partners and four keynote speakers.

Lunch will be provided.

RSVP

Or for further information please email Peter Wallerstein - Denbighshire County Council
E: peter.wallerstein@denbighshire.gov.uk

OUR KEYNOTE SPEAKERS

Professor Terry Gilmore, International Labour and Tourism Strategy Consultant
"Innovation and Creativity: Essential ingredients for successful destinations"

Dr. Gail Hayden-Gray, University of Wales, Tourism and Management
"Milking the Honey-pots: Spreading the benefits through integrated quality management"

www.cantata.eu.com



"Investindo no nosso futuro comum"





SAL TRADICIONAL
ROTA DO ATLÂNTICO



Enjoy Medieval Denbighshire

<http://medieval-wales.com/yourvisit.html>

CANTATA

Historic Landscapes
Economic Tourism

Denbighshire, Wales
Shannon, Ireland
Montemor-O-Velho, Portugal
Poher, Brittany
Galicia, Spain



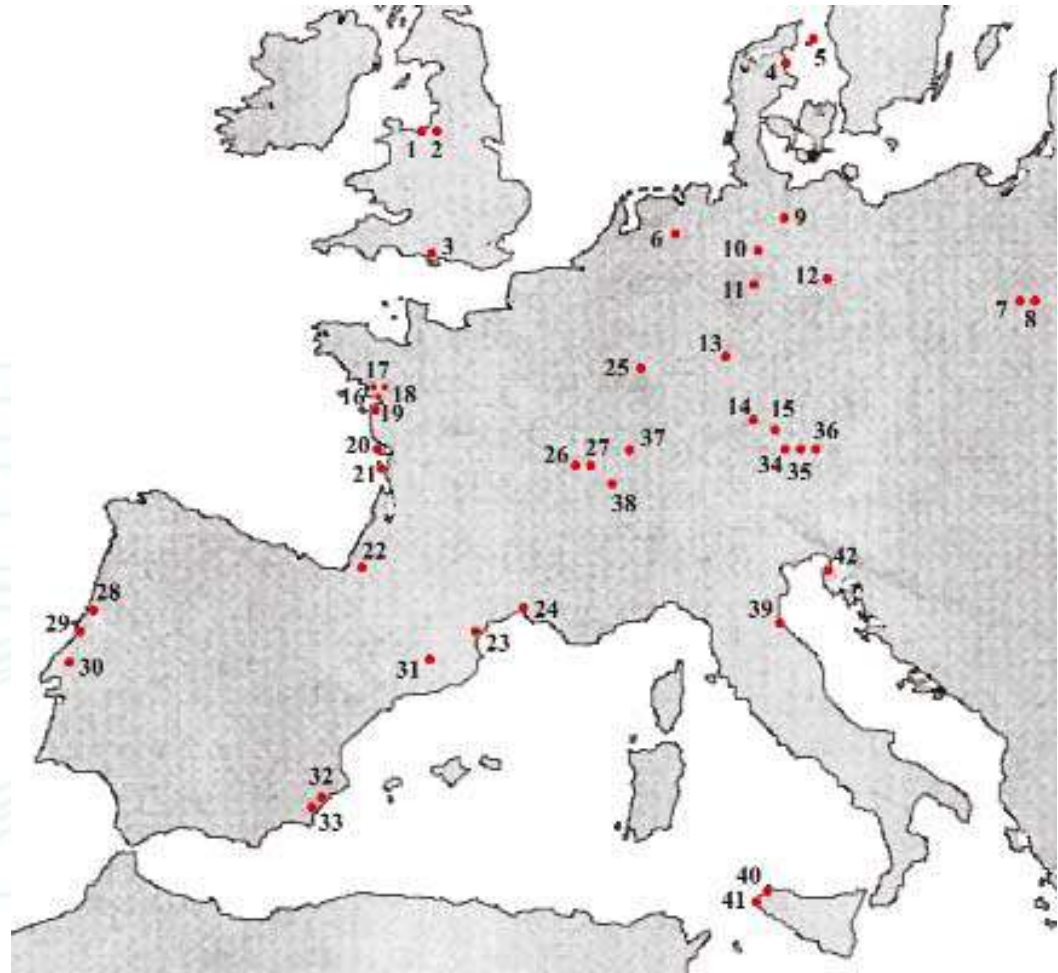


SAL TRADICIONAL

ROTA DO ATLÂNTICO



MedWet





SAL TRADICIONAL

ROTA DO ATLÂNTICO



<http://www3.aegean.gr/alas/general.htm>

MedWet



<http://www.medwet.org/>



Map of salinas in southern Europe

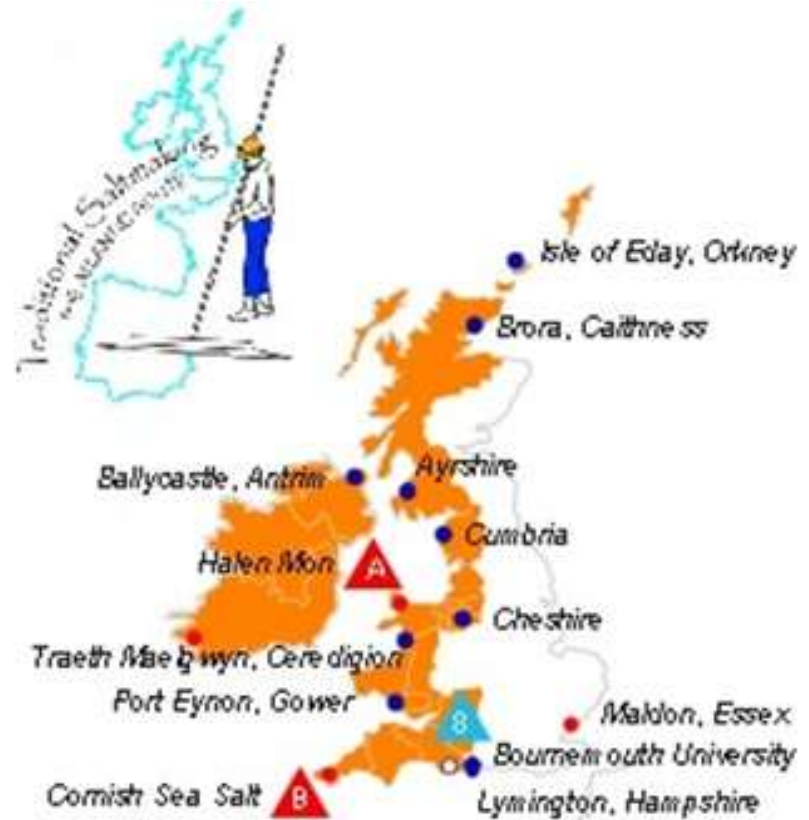




SAL TRADICIONAL

ROTA DO ATLÂNTICO

PROPOSALS FOR THE UK 'ROUTE OF SALT'



- Divide the UK into 5 Areas
- Select Lead Sites in Each Area
- Contribute to Existing Programmes
- Encourage Networking within UK and with EU Partners
- Seek Additional Funding

Plenário da sede da Assembleia Municipal de Aveiro
15 de Novembro de 2011



SAL TRADICIONAL

ROTA DO ATLÂNTICO

PARTNERSHIPS

3 Existing UK
Artisan Sea Salt Makers

2 in the Atlantic Region

Anglesey Sea Salt Company
Cornish Sea Salt Company





SAL TRADICIONAL
ROTA DO ATLÂNTICO



a million
voices for
nature



ENGLISH HERITAGE



Llywodraeth Cymru
Welsh Government

PARTNERSHIPS



"Investindo no nosso futuro comum"





SAL TRADICIONAL
ROTA DO ATLÂNTICO

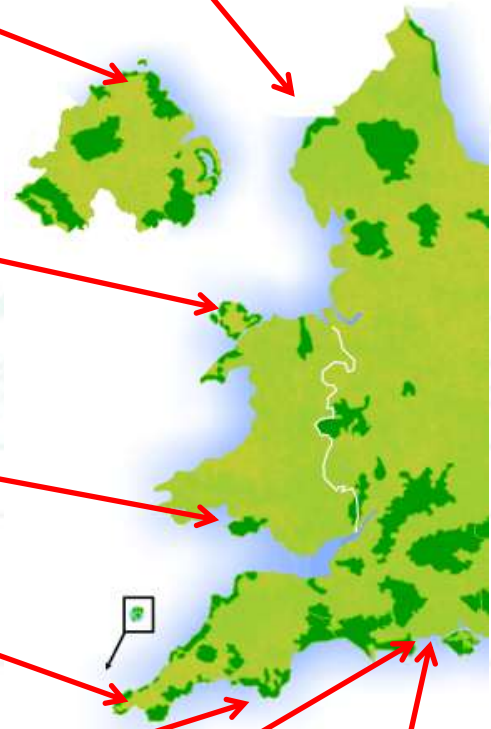


**Many UK sites
Are located in
AONB**

**AREAS
OF
OUTSTANDING
NATURAL BEAUTY**

They have links to

- **Local Planning**
- **Heritage**
- **Tourism**



"Investindo no nosso futuro comum"





SAL TRADICIONAL

ROTA DO ATLÂNTICO

We Propose
5 UK Areas

This presentation focuses
On two areas

Wales
&
North West England
(Cumbria and Cheshire)

Southern England • Salinas, Salt Marshes and Cornish Sea Salt



The SW region has salt making remains dating from the prehistoric to the present day on the coast of Dorset, Devon, Cornwall and Somerset. Salt marshes and salina environments similar to the continental examples.

Cornish Sea Salt Company, Cornwall.
Poole Harbour, Dorset.
Kimmeridge, Dorset.
Supporting sites:
Lymington, Hampshire.
Salterns on the Isle of Wight.
Maldon, Essex.

Wales

• Post-medieval Salt Works, Refineries and Halen Mor



Well preserved C16th salt works at Port Eynon, and historical records for a short lived works in the salt marsh estuary at Traeth Maelgwyn. C18th salt refinery sites used Cheshire rock salt to strengthen sea water.

Halen Mor, Brynsciencyn, Anglesey.
Traeth Maelgwyn, Ceredigion.
Port Eynon, Gower Peninsular, Swansea.
Laughame, Camarthen.
Gnoll Estate, Neath.
Merchants House Museum, Tenby.

North West England • Rock Salt Mines, Open Pans, Refineries and Bleaching



Salt making from 'wild brine' is known here from pre-Roman times. Rock salt mining began in 1670 and was used in a 'refinery' process at coastal sites. Both processes associated with subsidence. A 'bleaching' process was used on the Cumbrian coast.

Cheshire salt towns - Northwich, Middlewich, Nantwich and Winsford.
Subsidence at Ashton and Neumann's Flath.
Hilbre Island, Merseyside.
Fleetwood Museum, Lancashire.
Crosscanonby, Cumbria and other works on the Solway Coastal Footpath.

Scotland

• Bucket Pots, 'Salt-Slave' Workers and Smuggling



Sea water captured in rock cut basins at high tide was bucketed into pan houses. Until 1775 Scottish salt workers could be sold along with their salt works. Salt smuggling between England, Scotland and Ireland avoided the Salt Tax.

Prestweych Salt House, Ayrshire.
Saltcoats, Ayrshire.
Calf of Eday, Orkney.
Brora, Caithness.
Cork and Cork of Arran, Isle of Arran.
Acoy, Bute.

Northern Ireland

• Open Pan Salt Works and Rock Salt Mine



Salt making was part of a mix of industrial works that included coal mining and glass works. A working rock salt mine still operates at Carrickfergus.

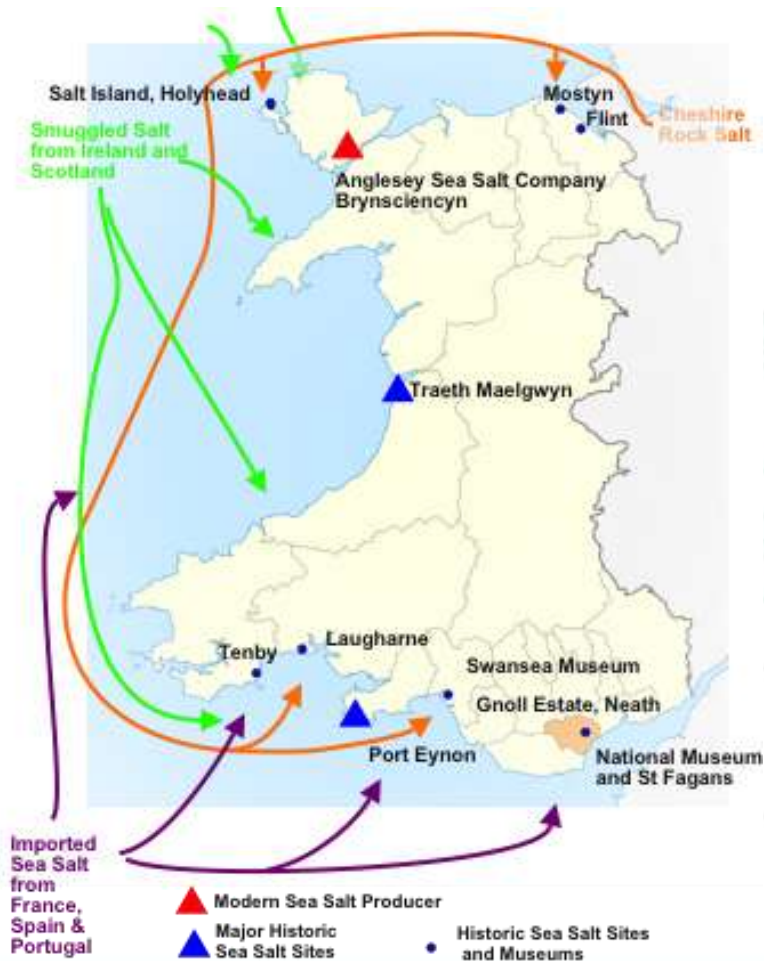
Ballycastle, County Antrim.
Carrickfergus Museum, County Antrim.



SAL TRADICIONAL

ROTA DO ATLÂNTICO

WALES



SALT ISLAND - ANGLESEY



SAL TRADICIONAL
ROTA DO ATLÂNTICO

WALES



LAUGHARNE MARSH - CAMARTHENSHIRE



SAL TRADICIONAL
ROTA DO ATLÂNTICO

WALES

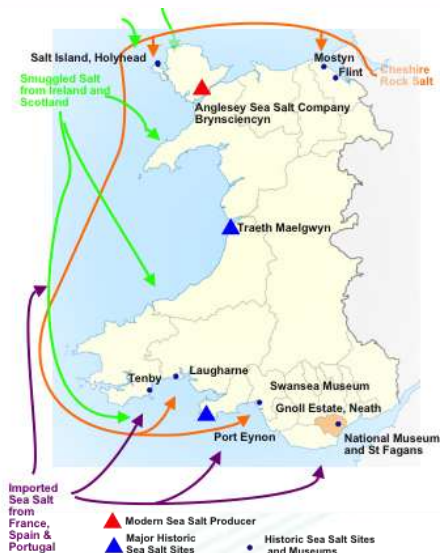


SALT ISLAND - ANGLESEY



SAL TRADICIONAL
ROTA DO ATLÂNTICO

WALES

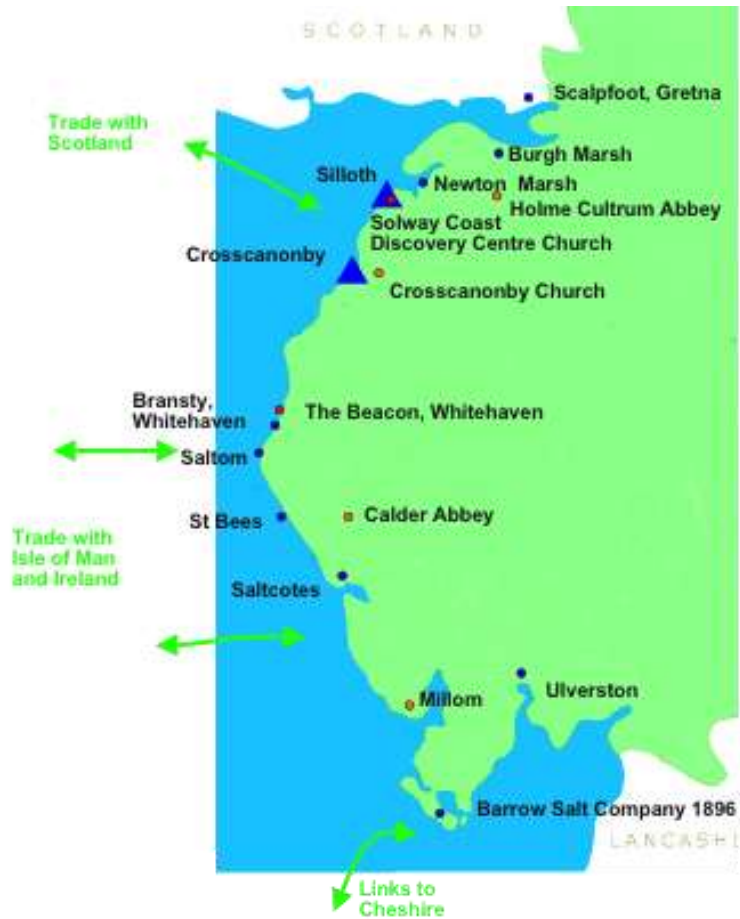




SAL TRADICIONAL

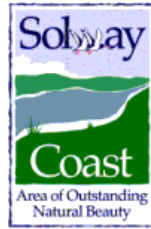
ROTA DO ATLÂNTICO

CUMBRIA





SAL TRADICIONAL ROTA DO ATLÂNTICO



CROSSCANONBY

Cumbria





SAL TRADICIONAL

ROTA DO ATLÂNTICO



CROSSCANONBY

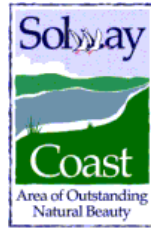


Cumbria



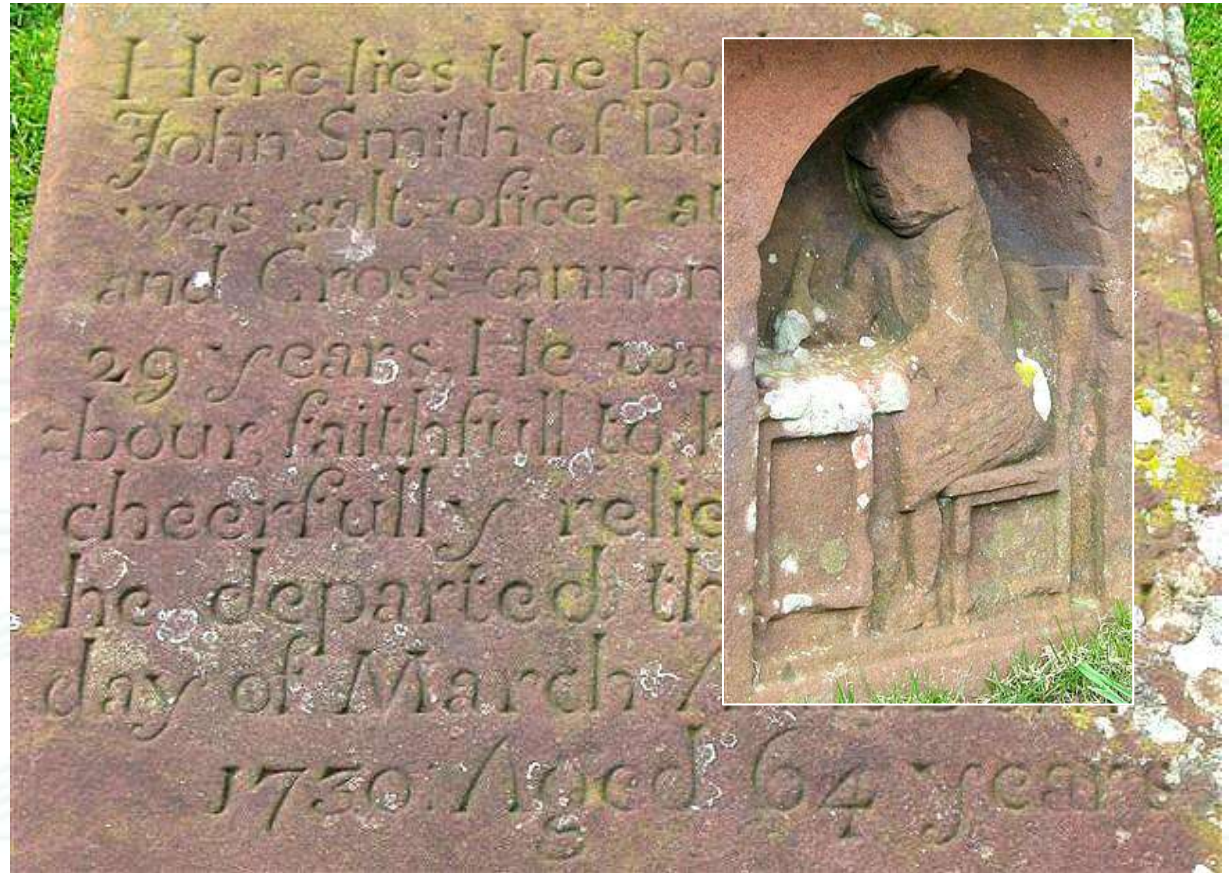


SAL TRADICIONAL
ROTA DO ATLÂNTICO



CROSSCANONBY TOMB OF JOHN SMITH – SALT OFFICER 1666 - 1730

Cumbria





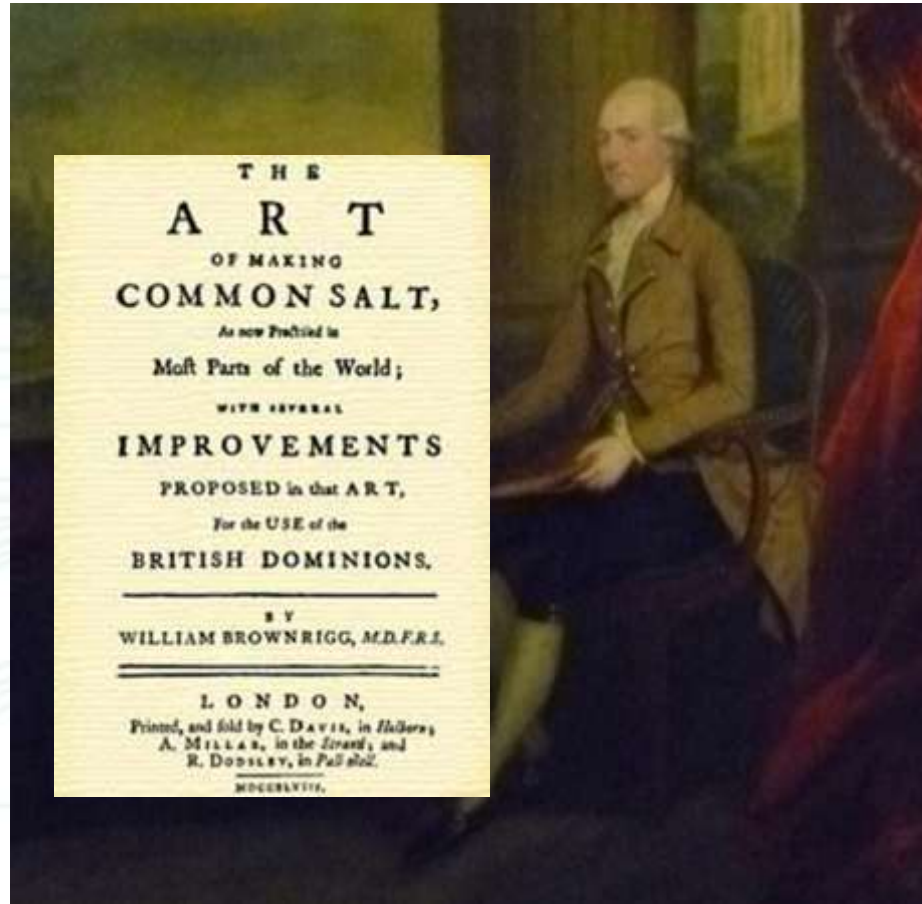
SAL TRADICIONAL

ROTA DO ATLÂNTICO

WILLIAM BROWNRIGG 1711 – 1810

The Art of Making Common Salt 1748

Cumbria





SAL TRADICIONAL

ROTA DO ATLÂNTICO

WILLIAM BROWNRIGG 1711 – 1810

The Art of Making Common Salt 1748

Cumbria





SOLWAY COAST

Salt Marsh, Salt Works, & Birds

SAL TRADICIONAL
ROTA DO ATLÂNTICO

Cumbria





SOLWAY COAST

Salt Marsh, Salt Works, & Birds

SAL TRADICIONAL
ROTA DO ATLÂNTICO

Cumbria



1 million voices for nature
RSPB

Welcome to Campfield Marsh nature reserve

Here there are a number of different habitats from saltmarsh to peatbogs and from farmland to wet grassland. This makes the reserve one of the most important places for wildlife in the UK and there is a great safety for you to see and enjoy.

The reserve's importance for wildlife has been recognised as it includes parts of the Bowmaker Common Site of Special Scientific Interest (SSSI) as well as the Upper Solway Flats and Marshes SSSI.

What to see at the estuary

At low tide many wading birds come to feed on the mud. At high tide, look out for thousands of cygnets, greys, plovers, knots and oystercatchers as they gather on the saltmarsh to roost.

Precious peatbog

This is one of the rarest habitats in the UK and is particularly important for plants and insects as well as bird species. Several species of subarctic moor grow here and simple, bog and silted areas.

Flourishing on the farmland

In summer, wading birds such as lapwings, redwings, spigs and curlews feed on the wet lands and you can hear wrens, thrushes and songbirds singing from the hedgerows. In winter, you can see large numbers of swans, ducks and geese including pin-tailed and barnacle geese, teal and wigeons.



SAL TRADICIONAL
ROTA DO ATLÂNTICO

SOLWAY COAST RSPB Proposed Interpretation Centre £700,000

Cumbria





SAL TRADICIONAL
ROTA DO ATLÂNTICO

SOLWAY COAST DISCOVERY CENTRE AONB Enhanced Landscape Interpretation £1.8m

Cumbria

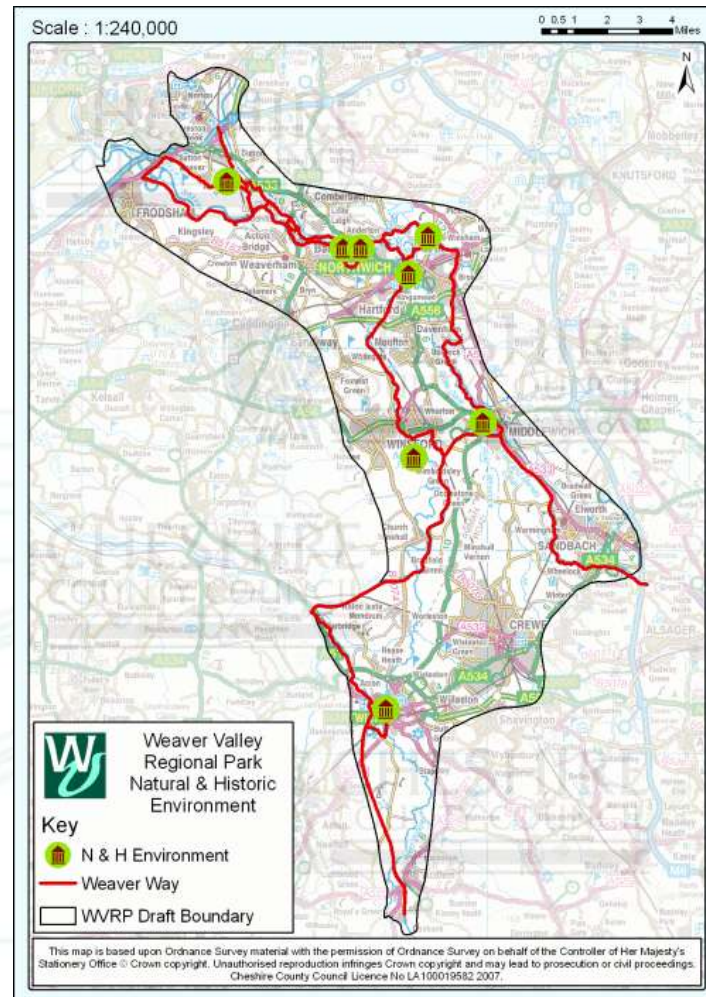




SAL TRADICIONAL

ROTA DO ATLÂNTICO

Cheshire

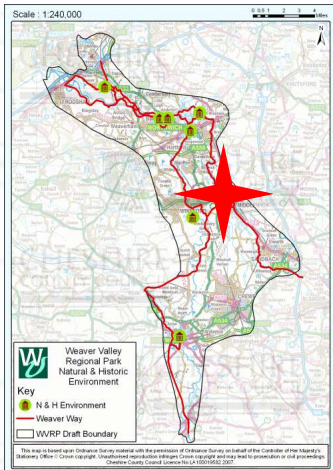




MIDDLEWICH HERITAGE Folk, Canal and Salt Festivals

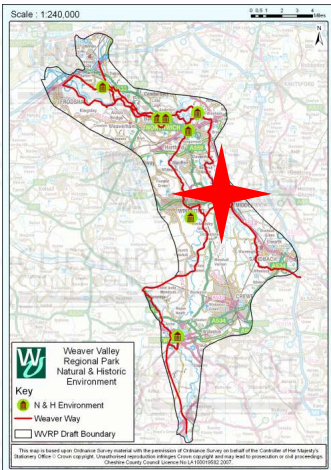
SAL TRADICIONAL
ROTA DO ATLÂNTICO

Cheshire





Cheshire

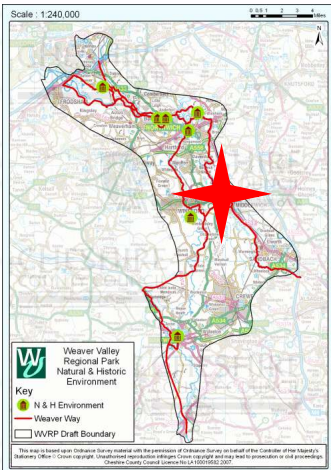




MIDDLEWICH HERITAGE Heritage Lottery Application £1m

SAL TRADICIONAL
ROTA DO ATLÂNTICO

Cheshire

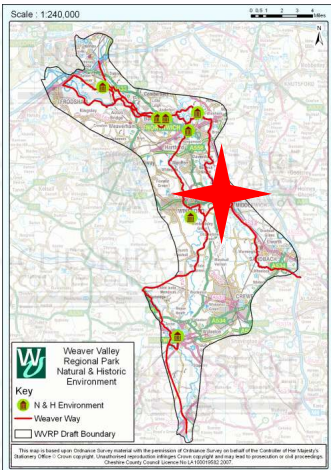




MIDDLEWICH HERITAGE Annual Heritage Fair

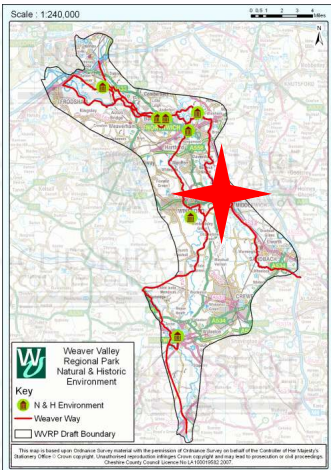
SAL TRADICIONAL
ROTA DO ATLÂNTICO

Cheshire





Cheshire

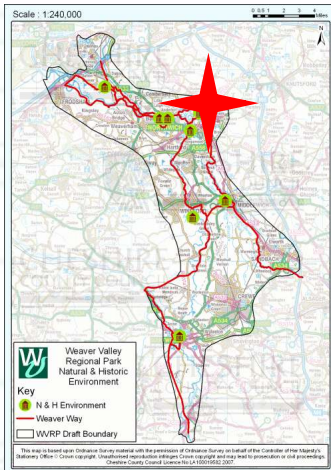




NORTHWICH LANDSCAPE INTERPRETATION Application for 'Saltscape' £2m

SAL TRADICIONAL
ROTA DO ATLÂNTICO

Cheshire





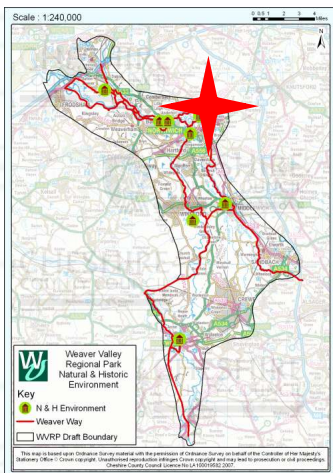
LION SALT WORKS 1894 to 1986

SALT MUSEUM REPAIRS AND CONSERVATION

Approval Granted of £8m

SAL TRADICIONAL
ROTA DO ATLÂNTICO

Cheshire





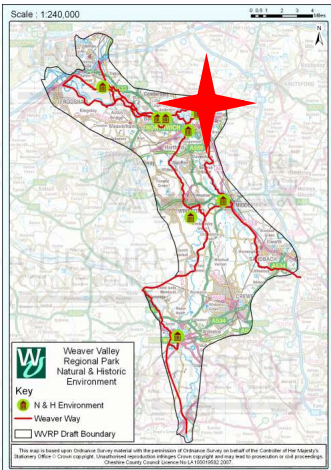
LION SALT WORKS 1894 to 1986

SALT MUSEUM REPAIRS AND CONSERVATION

Approval Granted of £8m

SAL TRADICIONAL
ROTA DO ATLÂNTICO

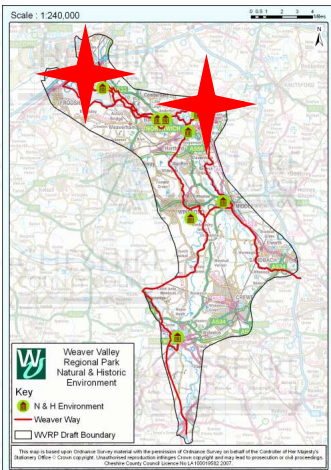
Cheshire





SAL TRADICIONAL ROTA DO ATLÂNTICO

Cheshire



<http://www.youtube.com/watch?v=jKxbn8ezU7U>

BISHOP OF BIRKENHEAD has started 'SALT SUNDAY' CELEBRATIONS



**St Helen
Witton, Northwich**

*"A Service of Celebration
and Thanksgiving for our Resources,
Industrial Heritage and Communities"*

With the Bishop of Birkenhead, Keith Sinclair, and Graham Sheen, a Reader from the Parish Church of St. John the Evangelist, Lostock Gralam.

The service starts at 9:30 a.m.



Salt Sunday
9th October 2011.

**St John the Evangelist
Weston Village, Runcorn**

"Creator, Creation, Creativity"

A Harvest Celebration led by the Revd Beth Gardener with family activities and guest George Oliver demonstrating his three favourite molecules.

A treat for the whole family beginning at 10:30 a.m.

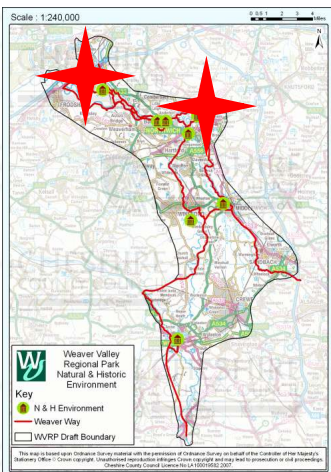




BISHOP OF BIRKENHEAD SALT SUNDAY CELEBRATIONS

SAL TRADICIONAL ROTA DO ATLÂNTICO

Cheshire





SAL TRADICIONAL

ROTA DO ATLÂNTICO

Cultural Elements

Some are only local to salt making towns

A salt ship model
Made by a Cheshire salt worker





Cultural Elements

Salt Glaze Ceramics
Salt Pigs & Table Salts

SAL TRADICIONAL
ROTA DO ATLÂNTICO





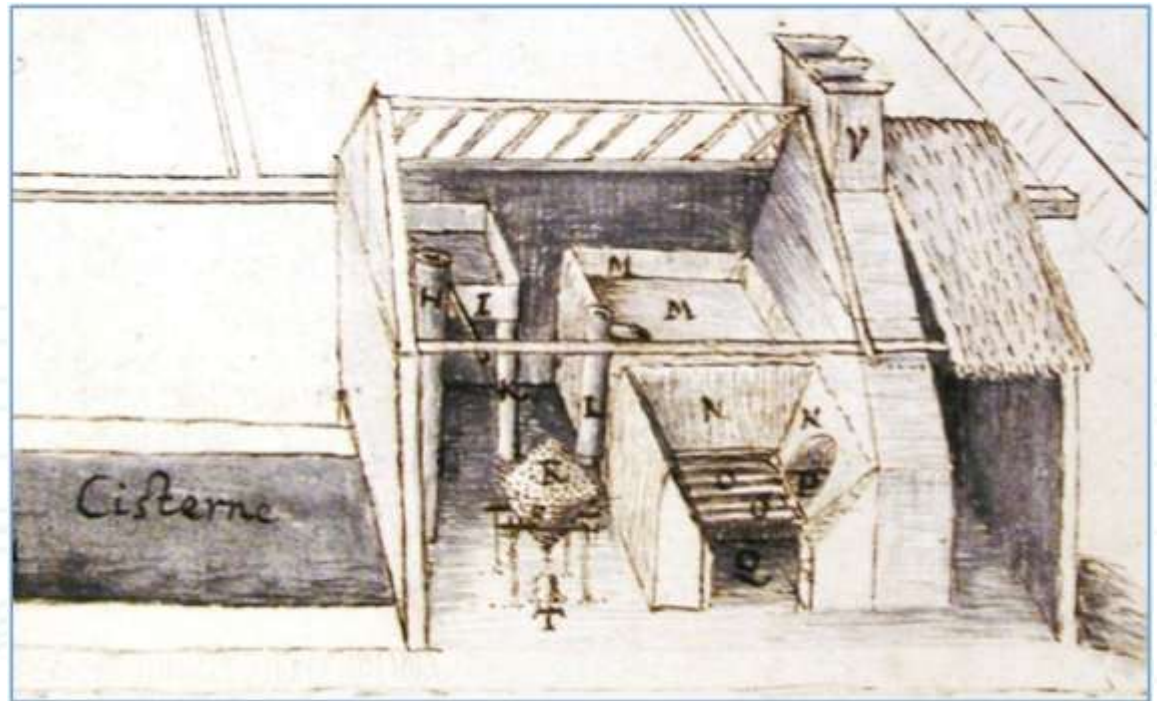
SAL TRADICIONAL

ROTA DO ATLÂNTICO

and FINALLY

We should incorporate
Modern Media

- Digital reconstructions
- Web sites
- Mobile technology





SAL TRADICIONAL

ROTA DO ATLÂNTICO

SUMMARY

- Sustainability
- Community Engagement
- Legacy
- Multiple Funding Streams
- Time Table for Publications
- Publicity and Launch Plan
- Communication and networking between sites